

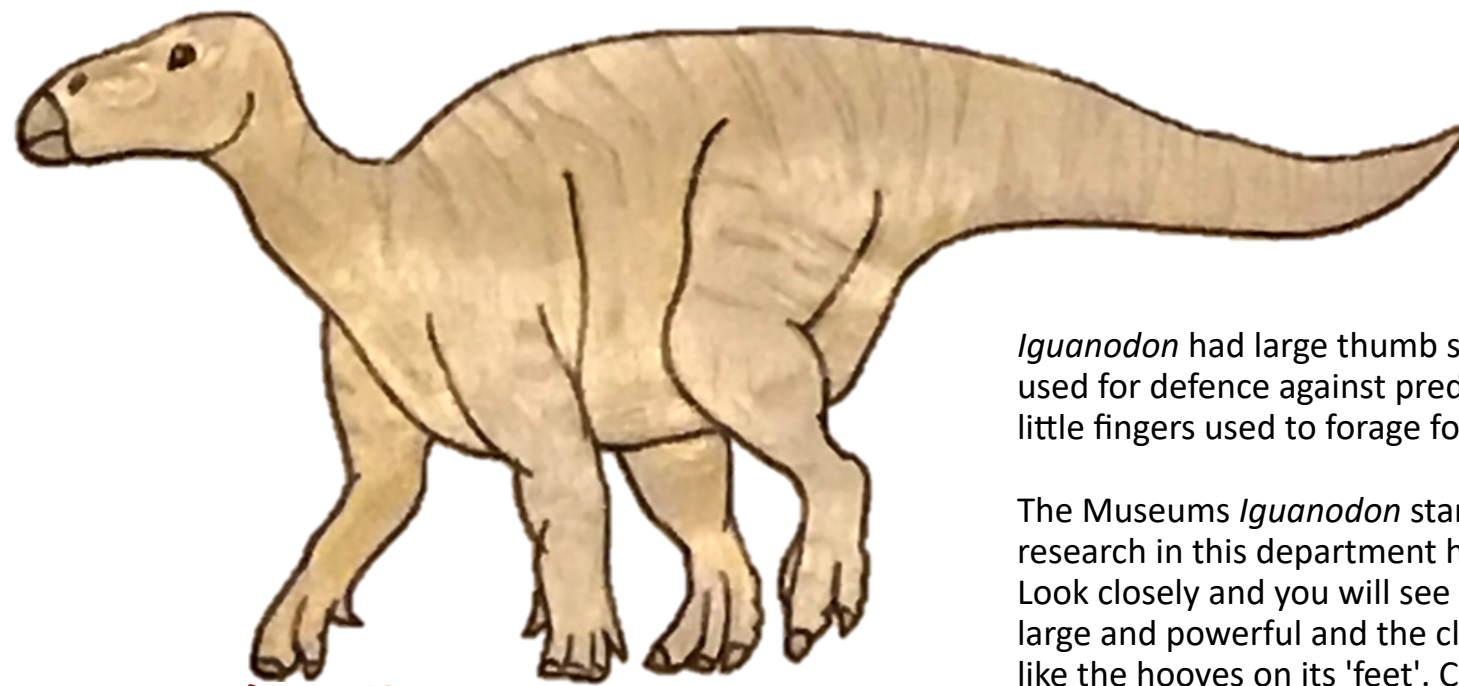
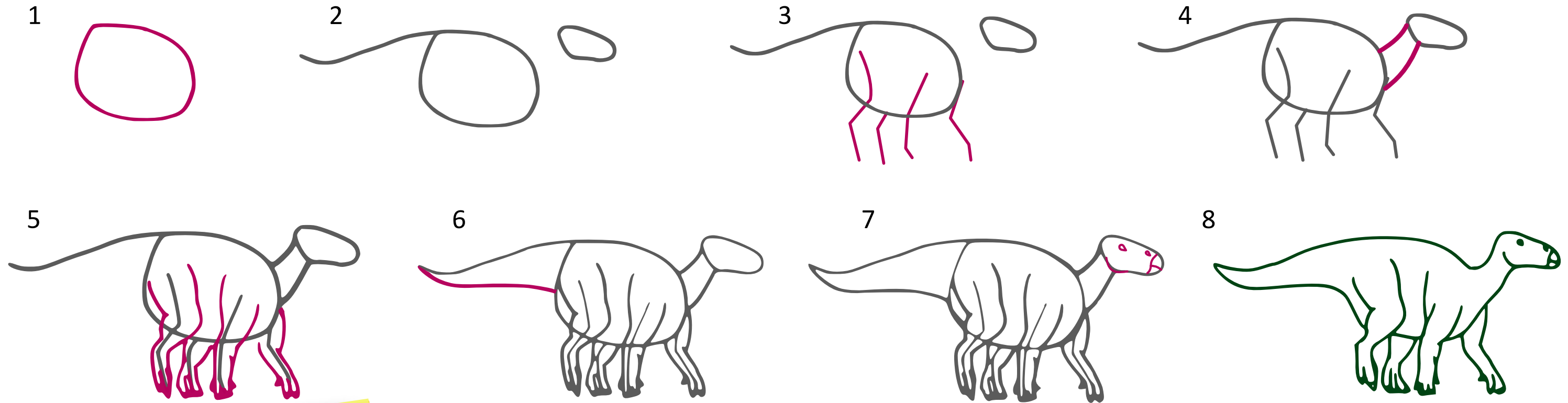
# Draw-a-saurus

## Iguanodon

Lightly sketch step 1, then add the pink lines from step 2 on top of step 1. Keep adding the pink lines from each step until you reach step 8. Draw firmly over your final lines then colour your dinosaur.



Sedgwick Museum  
of Earth Sciences



Fact file:  
Name: Iguanodon  
Pronounced: ig-wHA-noh-don  
Meaning of name: Iguana tooth  
Length: 10 metres  
Diet: Herbivorous  
When it lived: Cretaceous  
(140-100 million years ago)

*Iguanodon* had large thumb spikes, which might have been used for defence against predators, and long prehensile little fingers used to forage for food.

The Museums *Iguanodon* stands on its back legs however research in this department has shown this is not right. Look closely and you will see the hands and arms are very large and powerful and the claws on the 'hands' look just like the hooves on its 'feet'. Combined with fossil footprint evidence, this tell us *Iguanodon* walked on all four legs.



Sedgwick Museum of Earth Sciences, Downing Street, Cambridge CB2 3EQ  
01223 333456 [www.sedgwickmuseum.org](http://www.sedgwickmuseum.org)

With thanks to Wednesday Batchelor for the drawings.