

TRAVEL
AGENTS



The Fitzwilliam Museum is home to half a million beautiful works of art, masterpiece paintings and historical artefacts. Now you can take a trip using its special collections. But where to go? Follow the arrows to find your perfect holiday destination.



FIRST PACK YOUR BAG

Player 1 starts: 'In my bag I packed...' Player 2 repeats this and adds an item they packed beginning with an 'A' such as an apple. The next player should repeat it all and add something starting with 'B'. Continue like this. How many things will you be able to remember?



WOULD YOU LIKE TO EXPLORE OUTSIDE ON YOUR TRIP?

WOULD YOU LIKE TO SEE ANCIENT HISTORY?

NO THANKS

OH YES!

OH YES!

That was a long flight! You've arrived in Egypt. This is Papeu's sarcophagus (coffin).

Make an Egyptian neckpiece souvenir:

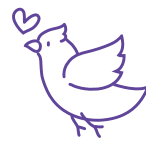
- Make a semi-circle out of card
- Decorate with patterns inspired by Papeu.
- Make a hole on each side and tie some string on. Wear with pride!



NO THANKS

Welcome to North America. Let's go bird watching.

Look outside. How many birds can you spot? Draw your favourite!



Okay, let's stay close by. This hoard of gold and silver coins was found in Cambridge.

Go on a treasure hunt around your home. Make a map to remember where the special things are kept!



How was your trip? Create a postcard to tell people where you went. You could give it to a friend or family or even post it to the Fitzwilliam Museum. All these activities are from our **LOOK, DO** home resources. For more information on these objects and for art inspiration google "Fitzwilliam Museum Look Think Do".