

The Fitzwilliam Museum

Visual Story



Welcome to the Fitzwilliam Museum.

The museum is free to look around.

The road outside can be noisy and busy.



The museum has two entrances

The Courtyard entrance which is flat level access. There are two sets of automatic doors to get in.



This entrance can be very noisy and busy as it is also our group entrance.

The other entrance is the main entrance



There is a revolving door to get into the museum.



There are help desks at both entrances. Staff can answer questions. You can pick up a map to help you find your way around.

The courtyard entrance



The main entrance



If you have a backpack on you will need to leave it in a locker in case your bag accidentally damages an object or painting.



It will be safe.

At the main entrance, you hand your backpack over to a staff member behind the help desk.

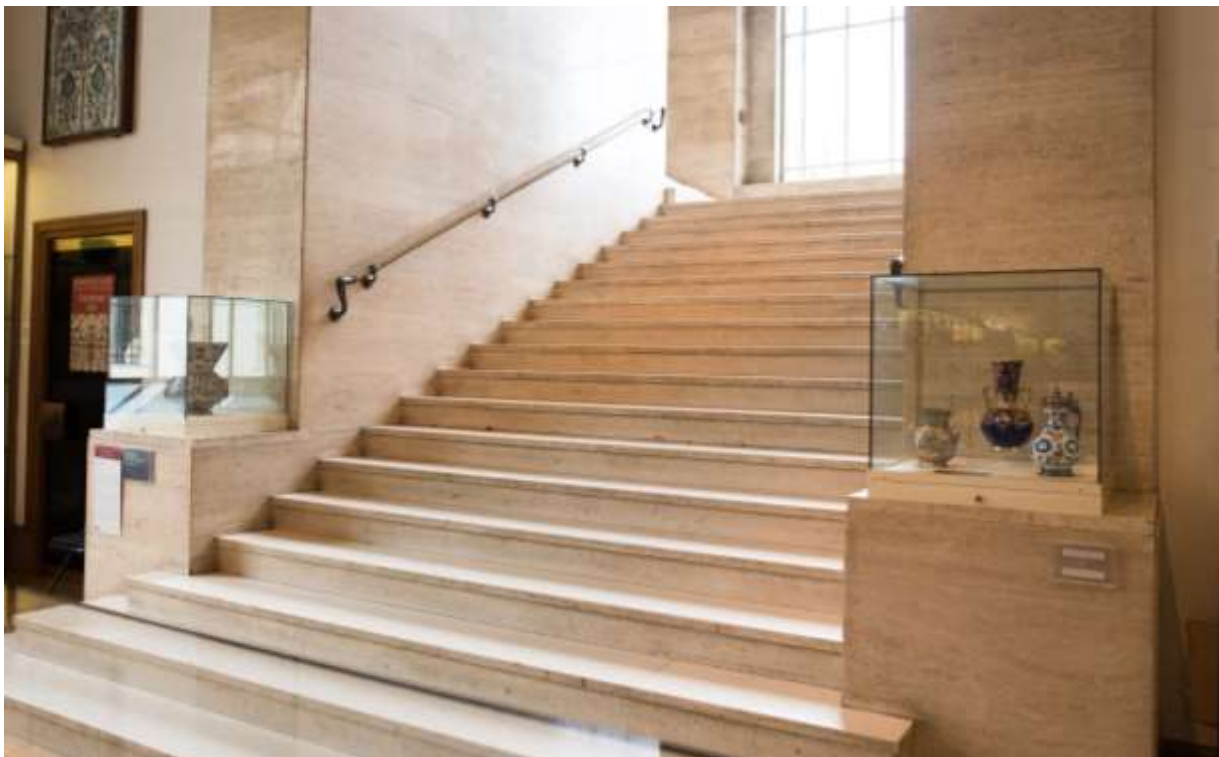
If you don't have a bag you can go straight into the museum

The objects and paintings are on two different floors; ground and first floor.

There is a lift to take you between floors



Or there are stairs



The toilets are on the lower ground floor.



If you get tired there are benches & seats in some of the galleries.



If you need help there are staff in many of the galleries.
They are either Visitor Service Assistants



or Security Assistants.



Everyone is here to help and answer any questions you might have.

If you want to buy a drink or some food we have a café on the ground floor.



Choose your food and pay at the counter, then sit down. Staff will bring everything to you and clear away when you have finished



You can't walk around the museum eating and drinking.

We have a shop on the first floor where you can buy a selection of things to take home.



My social story